



Children's Services in Guide Dogs 0-25

Jenny Lane

Who can access our services?

- Children and their families
- Age 0-25
- Children and young people with additional needs, complex needs, and those with profound and multiple learning difficulties
- Professionals and other organisations
- www.guidedogs.org.uk
- 0800 781 1444

National Children's Services

Family Support and Family Events

Education Support

Custom Eyes Books

Access technology and Grants

Tech for All

My Time to Play

My Life Skills/ Habilitation

Buddy Dogs and Young People GD Service

My Life Skills/Habilitation



What is habilitation?

Habilitation enables a child to understand the world around them, to engage with it and move safely through it.

It is provided by Qualified Habilitation Specialists and should be provided by the Local Authority alongside the support provided by a QTVI.

Habilitation Specialists will work with a child throughout their childhood to provide support and training at appropriate intervals in their home, school and community.

What does Habilitation include?

Early Support

Mobility, Orientation and Independence

Independent Living Skills

Social and Emotional Development

Supporting families and professionals

Mobility and Orientation

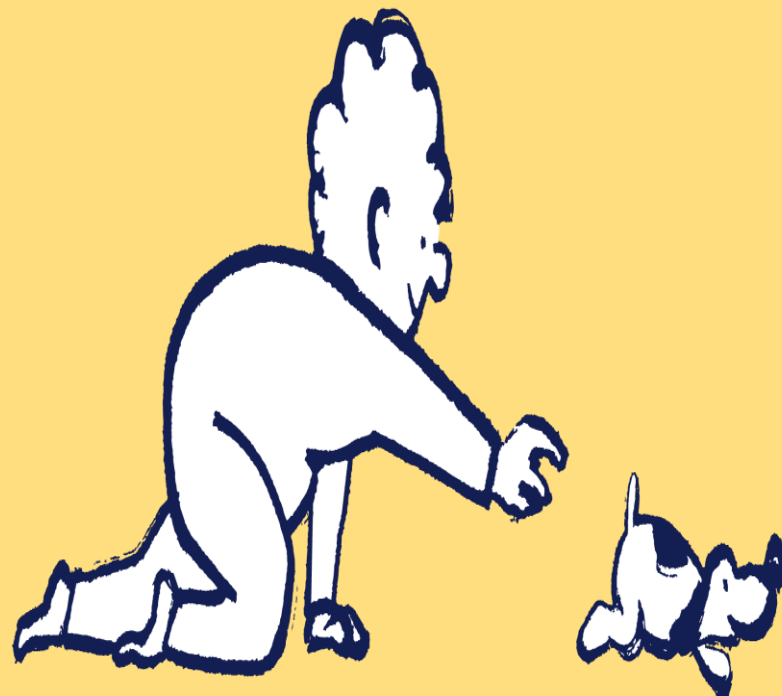
Mobility skills begin from birth with the development of movement and sensory skills.

Mobility is movement from one place to another often learning to use a mobility aid such as a long cane. It includes learning routes, crossing roads and using public transport.

Orientation is having skills to navigate your environment safely using sensory clues and environmental landmarks

Why is Mobility Important?

- 80% of learning is visual, sighted children learn incidentally, by observing what is going on around them.
- From the earliest stages, movement stimulates brain activity, strengthens muscles, helps develop co-ordination and body awareness
- Simply by moving through space and playing with toys children are learning how movement supports their discovery of the world and the things within it.



‘My Time to Play’ Early Year’s Service 0-4

[My Time To Play | Guide
Dogs children and young
people services - YouTube](#)



Developing Independent Mobility



Sensory Development

- Kinaesthetic
- Vestibular
- Proprioceptive
- Touch/Tactile
- Smell/Olfactory
- Taste/Gustatory
- Sound/Auditory
- Residual Vision

Mobility: Learning concepts - a trip to the park

- * A trip to the park would provide opportunities to discover:
- * Textures- hard, soft, rough smooth.
- * Learn about weather and temperature
- * different environmental materials -wood, metal, brick, concrete, grass, sand, mud
- * Cause and effect - Play in puddles, piles of leaves, snow or sand.
- * Transfer these skills to Learn about street furniture-bus stop, bench, litter bin, fence, postbox, lamp post, gate. These are not always the same a gate could be wooden or metal.

Positional Concepts

- Left/Right
- Infront
- Behind



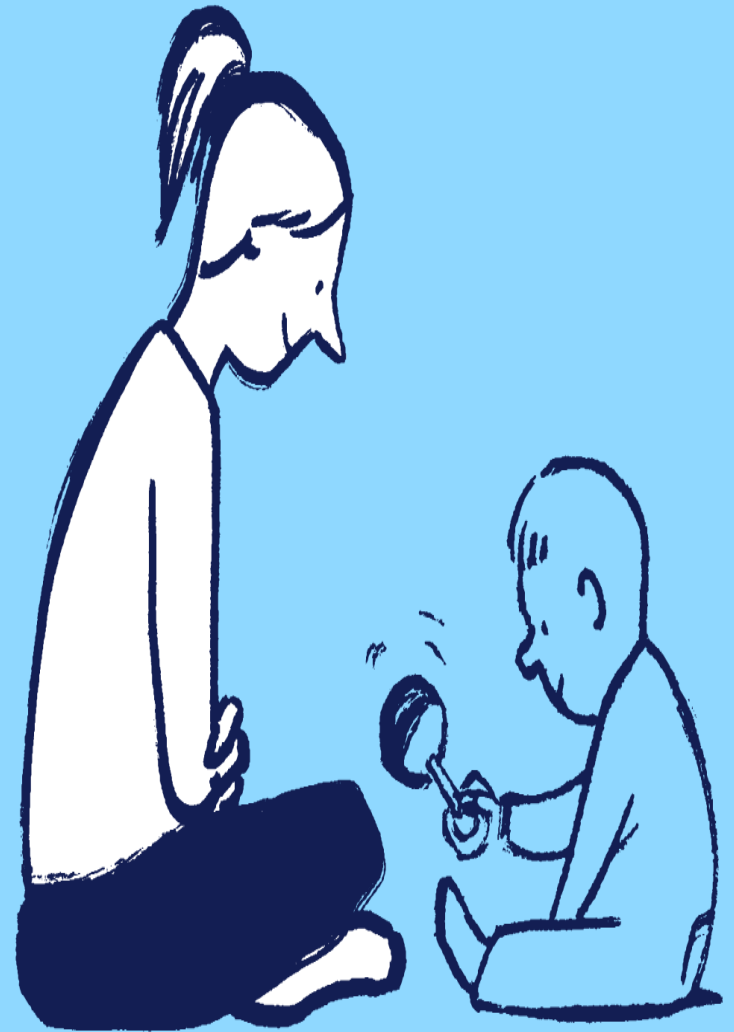
Learning Through PE

- Gross motor skills
- Balance
- Co-ordination



Fine Motor Skills

- Grasp
- Grip
- Individual finger manipulation - e.g pincer grip
- Transfer of objects /one hand to another across midline



Independent Living Skills

- Dressing skills - buttons zips
- Using Cutlery
- Personal care - brushing teeth, tying shoelaces
- Holding a pencil, using keyboard, I-pad



**Transition to School/
College/Uni/Work**

**Advanced Mobility and
Orientation/Life Skills**

Self Advocacy

Guide Dog

